

TransPLANT - ELIXIR

Antoine Janssen

Who we are

Leading Research Company in molecular plant breeding



The image features a green world map with three KeyGene locations highlighted. Arrows point from the KeyGene logo to each location. The locations are: Rockville, MD (USA), Wageningen (Netherlands), and Shanghai (China). Each location is accompanied by a photograph: a modern glass building for Rockville, MD; a large industrial-style building for Wageningen; and a laboratory setting for Shanghai. A fourth photograph in the bottom left shows scientists in a lab.

Rockville, MD

Wageningen

Shanghai

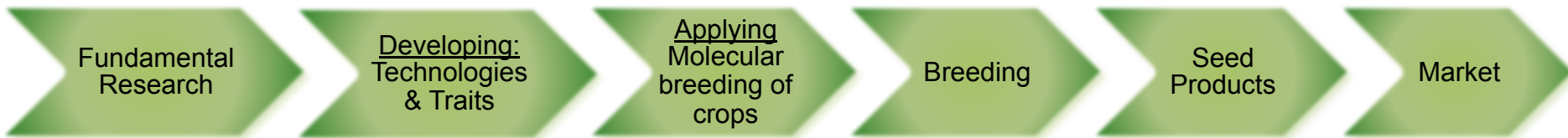
25 years experience, 135 scientists

What we do

R&D strategy

Licensing in

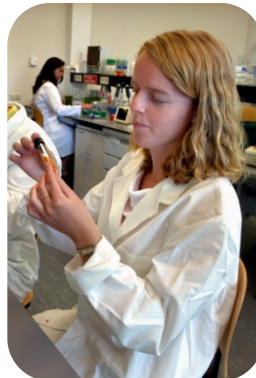
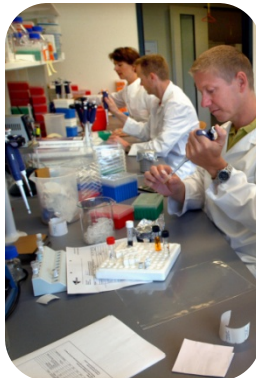
Collaborations



Universities

KeyGene

Partners Breeding industry



What we do

Long-term partnerships with leading industry

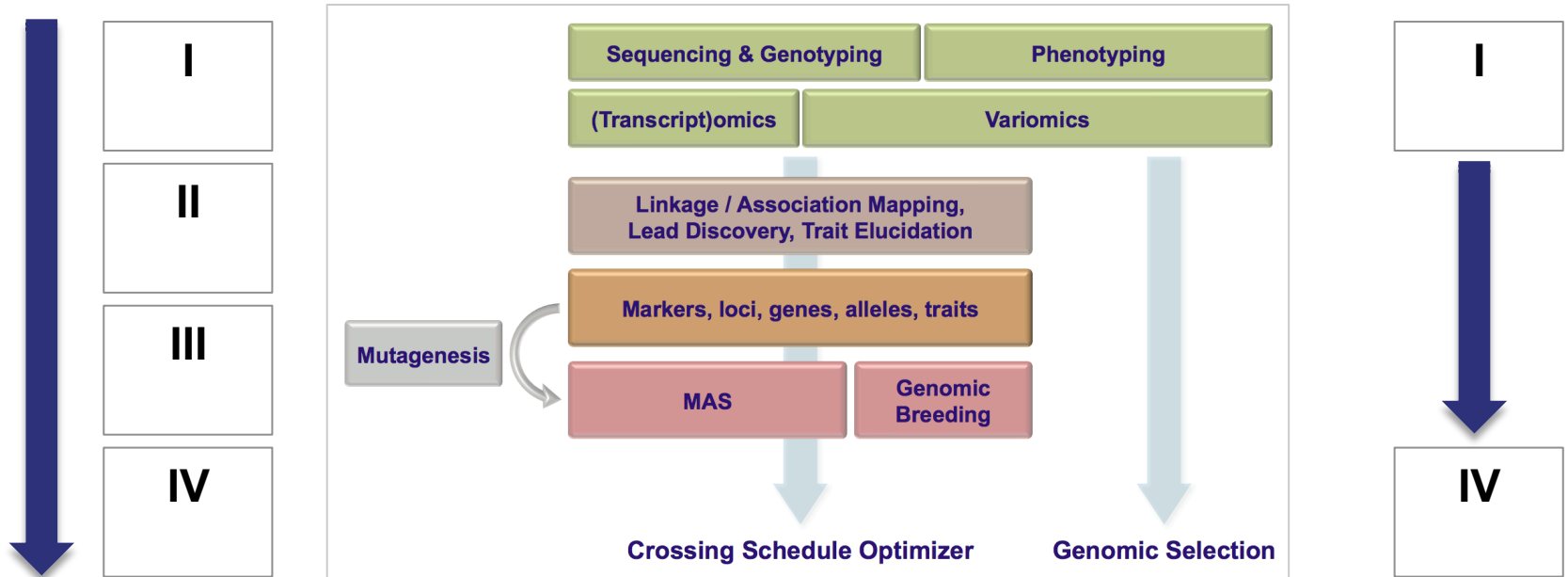


What we do

From data to traits and breeding strategies

- I. Data
- II. Lead Discovery
- III. Molecular Mutagenesis for trait development
- IV. Breeding strategy design

- WP4
- WP5
- WP6
- WP8
- WP10



Role in nat. community / int projects

- Industry partner with a large world wide customer base
- Participant in multiple int. projects like
 - TransPLANT
 - epiTraits
 - EPPN
 - Drive4EU
 - NIFA